

ORIGINAL



0000178199

Transcript Exhibit(s)

Docket #(s): L-00000BBB-17-0073-00174

Arizona Corporation Commission

DOCKETED

MAR 21 2017

DOCKETED BY

GB

---



---



---



---



---

RECEIVED  
 AZ CORP COMMISSION  
 DOCKET CONTROL  
 2017 MAR 21 P 2:22

Exhibit #: Prefiling 1 - Prefiling 5

---



---



---



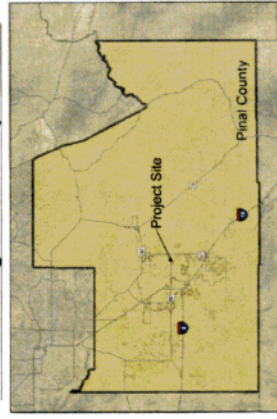
---

# Pinal Central Energy Center

Figure 1

- Project Features**
- Proposed 230kV Gen-tie
  - Proposed Substation
  - Proposed Gen-tie CEC Corridor
- Electrical Features**
- Pinal Central 230/500kV Substation
  - 115kV Substation
  - 500kV Transmission Line
  - 115kV Transmission Line
  - Future Sundance to Pinal Central 230kV Transmission Line (Case #136)
  - Future SunZia Southwest 500kV Transmission Lines (Case #171)
  - Proposed Pinal Central Energy Center Solar Facility
- Reference Features**
- Canal/Ditch
  - State Highway
  - Streets

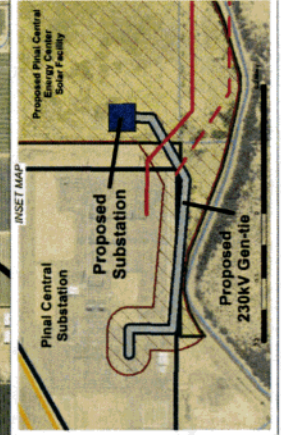
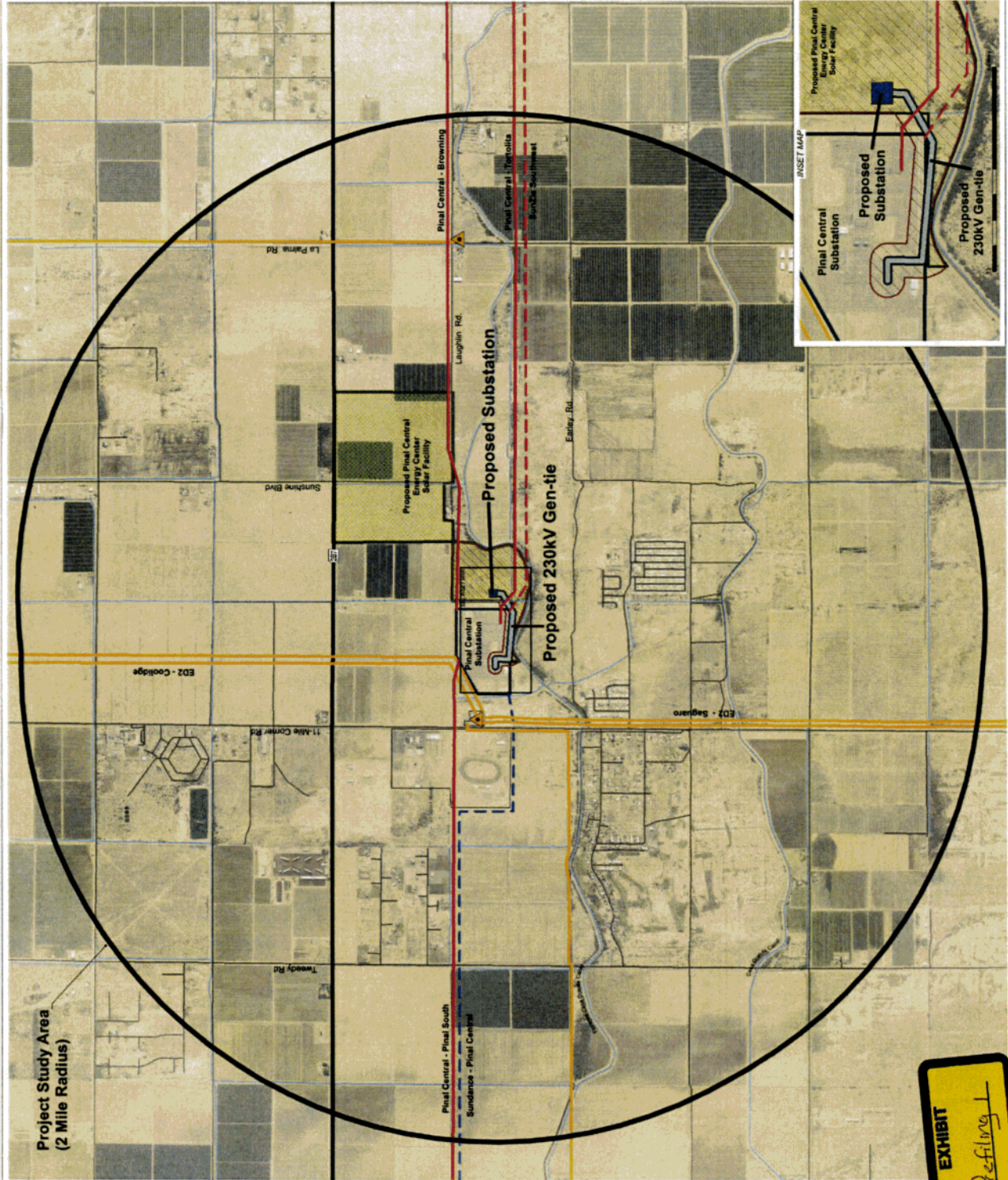
## Regional Area Map



March 2017



March 2017



Project Study Area  
(2 Mile Radius)

EXHIBIT  
Pefiling

**EXHIBIT**

*Preliminary*



**Sources**

NAD 83, 2011  
 NAD 83 Imagery, 2016  
 USGS, 2015  
 EPD, 2016

August 2016



**Project Features**

- Subject Parcels
- Canal/Ditch
- State Highway
- Streets

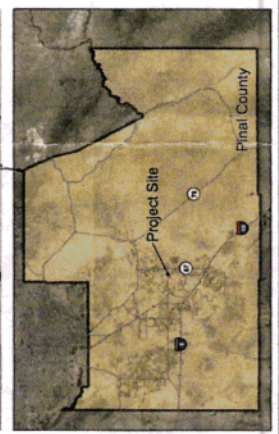
**Existing Utilities**

- 500kV Substation
- 115kV Substation
- 500kV Transmission Line
- 115kV Transmission Line
- Section Line
- Section Number

**Reference Features**

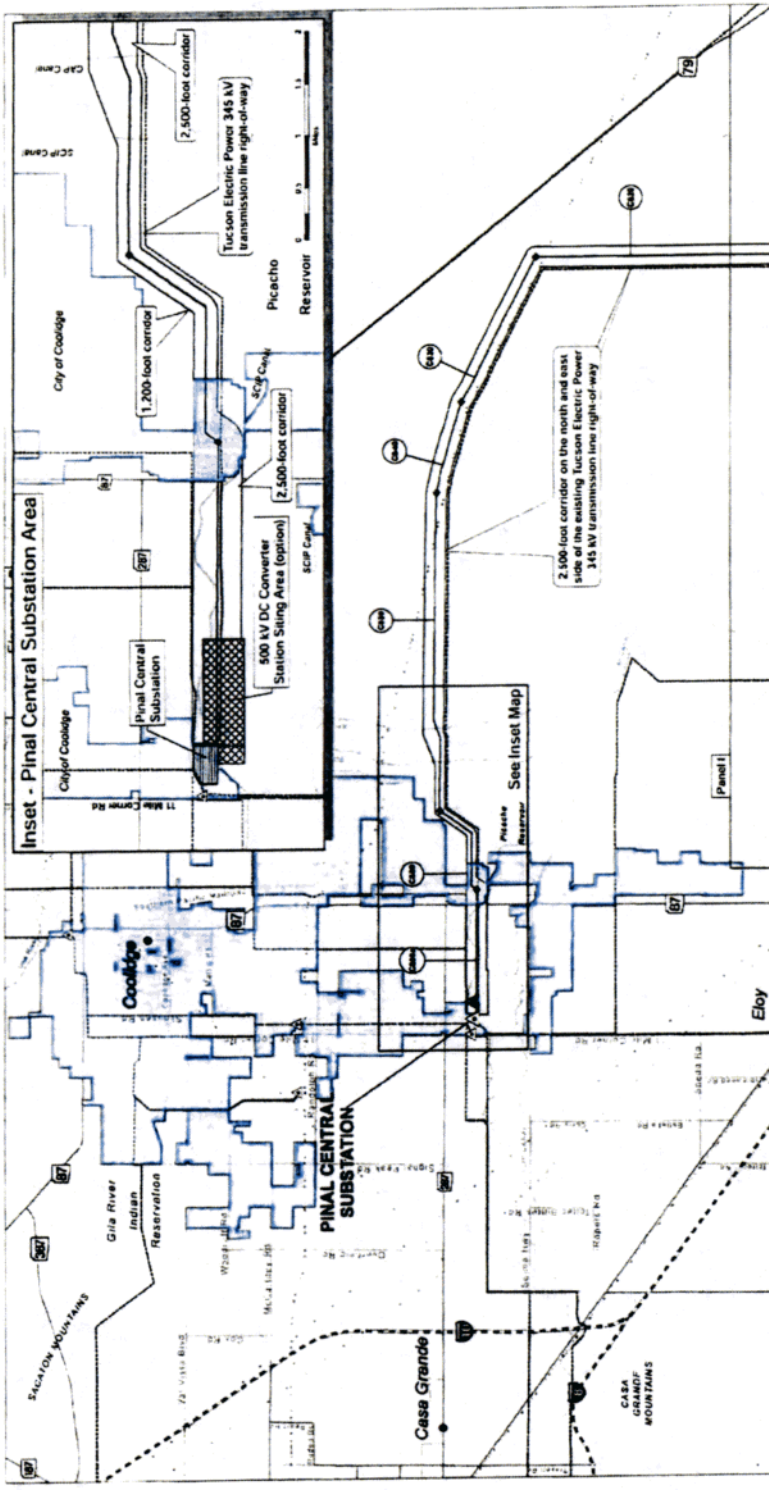
- Section Line
- Section Number

**Regional Area Map**

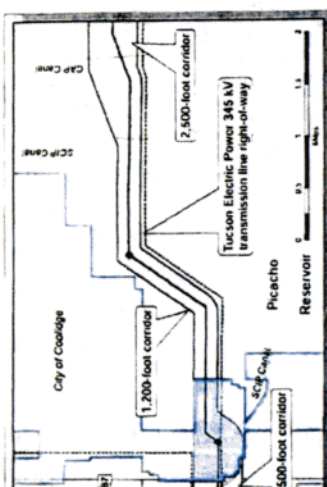


**Boulevard  
 Associates, LLC**  
**Pinal Central Power**  
*Proposed*  
**Major Comprehensive Plan  
 Amendment Parcels**

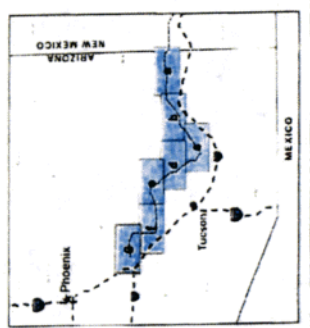




**Inset - Pinal Central Substation Area**



**Sources**  
 Bureau of Land Management, Arizona State Office, 2010  
 Pinal County, 2015  
 Pinal County, 2015  
 USGS, 2015



- Reference Features**
- City/Town
  - Interstate
  - Highway
  - Local Road
  - Railroad
  - River/Stream
  - State Boundary
  - County Boundary
  - City/Town Boundary
  - International Boundary
  - Latitude/Longitude

- Utilities**
- Existing Substation
  - Proposed W/line
  - 500 kV Substation
  - Proposed 500 kV DC Converter Station (Optional)
  - Existing Transmission Lines
  - Pipeline
  - Canal

- Project Features**
- 2500' Wide Corridor
  - Corridor Centerline
  - Link Node
  - Link Member

**CEC Corridor Map**  
**SUNZIA SOUTHWEST TRANSMISSION PROJECT**  
  
**Panel 9**  
**Case No. 171**  
**Attachment A**

**EXHIBIT**  
*Exhibit 3*

**NOTICE OF PUBLIC HEARING**

**Pinal Central Energy Center 230kV Generation Intertie Line Project**

**(Proposed new approximately 0.4-mile electric transmission line connecting the proposed Pinal Central Energy Center Solar Facility to the existing Pinal Central Substation)**

**Arizona Corporation Commission (ACC) Docket No.**

**X-XXXXXXXX-XX-XXXX-XXXX**

**Commencing at X:00 am on:**

**April XX, 2017**

**Holiday Inn Casa Grande**

**777 N. Pinal Avenue**

**Casa Grande, AZ 85122**

**PUBLIC COMMENT MAY BE TAKEN AT THE BEGINNING OF EACH HEARING DAY OR AT OTHER TIMES DURING THE HEARING AT THE DISCRETION OF THE CHAIRMAN OF THE COMMITTEE**

**Additional hearing days, if necessary, will be noticed on the ACC website.**

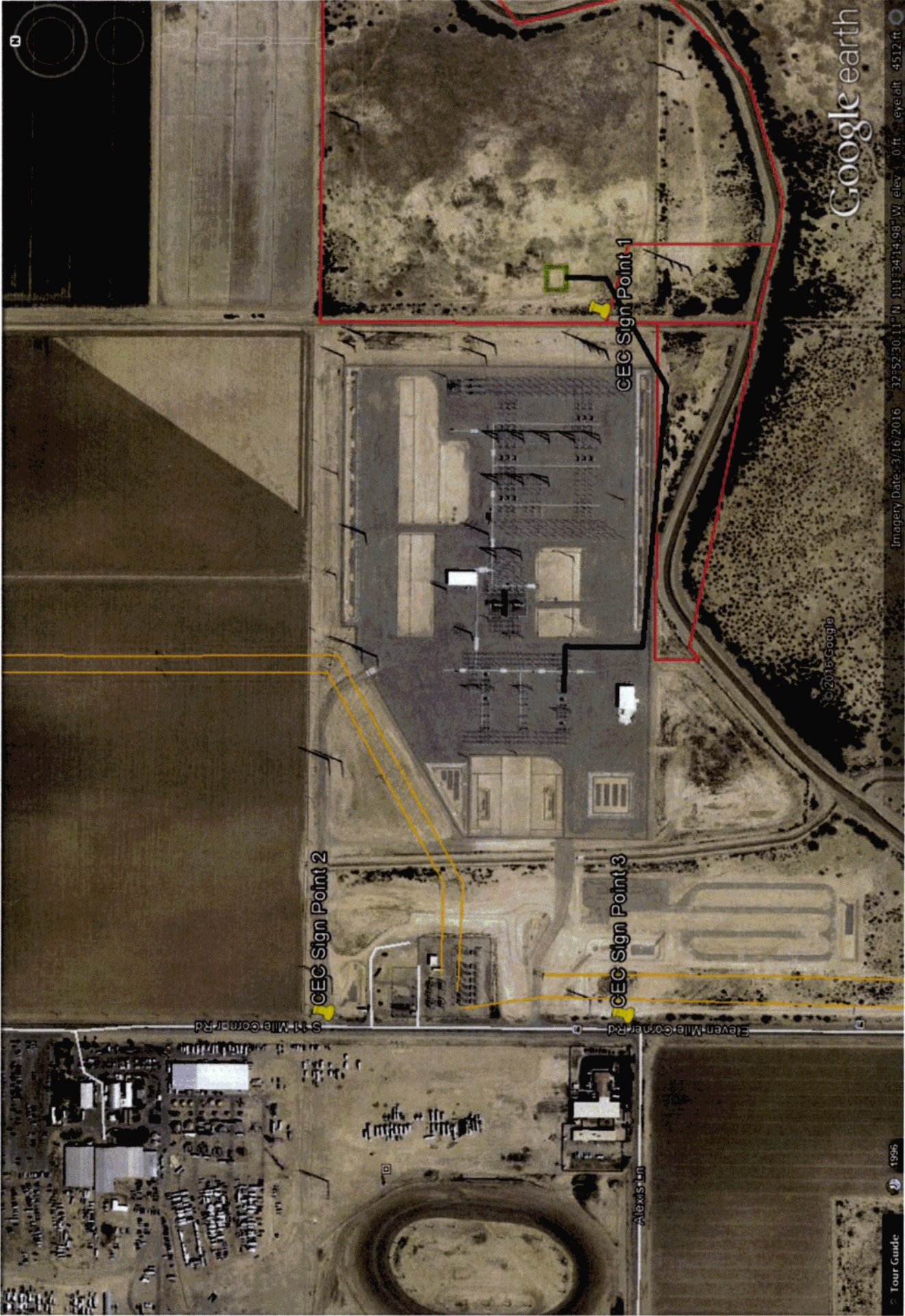
**The ACC website is: [http://www.azcc.gov/AZ Power Plant/LineSiting-Calendar.asp](http://www.azcc.gov/AZ_Power_Plant/LineSiting-Calendar.asp)**

**Contact Information:**

**Jess Melin, Pinal Central Energy Center Project Manager**

**561-267-1079, [Jess.Melin@nexteraenergy.com](mailto:Jess.Melin@nexteraenergy.com)**





EXHIBIT

Profiling

tabbler