

ORIGINAL

SOUTHWESTERN
Power Group II, LLC
An Energy Company - Alliance Builder



0000176801

Docket No. E-00000D-17-0001

January 30, 2017

Arizona Corporation Commission

DOCKETED

JAN 30 2017

DOCKETED BY
VM GB

RECEIVED
AZ CORP COMMISSION
DOCKET CONTROL
2017 JAN 30 PM 11:26

Docket Control
Arizona Corporation Commission
1200 West Washington
Phoenix, Arizona 85007

Subject: Bowie Power Station, LLC
Ten Year Plan for 2017
Decision Nos. 64625, 64626, 69339, 70588 and 71951

To Whom It May Concern:

Pursuant to A.R.S. § 40-360.02 (A) and (C), Bowie Power Station, LLC ("Bowie") hereby submits its Ten Year Plan filing for the year 2016 for the transmission line facilities which are the subject of a Certificate of Environmental Compatibility ("CEC") which was granted by the Commission on March 7, 2002 in Decision No. 64626. This decision was extended through December 31, 2010 by the Arizona Corporation Commission ("Commission") on February 20, 2007 in Decision No. 69339, and further extended through December 31, 2020 by the Commission on November 1, 2010 in Decision No. 71951.

Appendix "A" includes a map depicting the approved 345 kV transmission line alignment and Willow Substation location. As used herein, the phrase "transmission line" includes all facilities contained within the definition of that phrase as set forth in A.R.S. § 40-360.

The information requirements set forth in A.R.S. § 40-360.02 (C) are found in Appendix "B".

Bowie continues its active involvement in regional transmission planning organizations, including the Southwest Area Subregional Transmission Planning Group and its subcommittees. Through its owner, SouthWestern Power Group ("SWPG"), Bowie remains an Affiliate Member in good standing in the Western Electricity Coordinating Council. During December 2014, SWPG became a member of

WestConnect and will be involved in transmission planning activities performed by this organization.

Please direct any questions that may arise from this report to the undersigned at (602) 808-2004.

Sincerely,



Tom C. Wray
Manager, Transmission and Generation Projects

Appendices (2)

Cc: File

Docket Control (13 copies), Arizona Corporation Commission

Elijah Abinah, Acting Director, Utilities Division, Arizona Corporation Commission

Tim La Sota, Esq., Legal Division, Arizona Corporation Commission

David Getts, Southwestern Power Group II, LLC

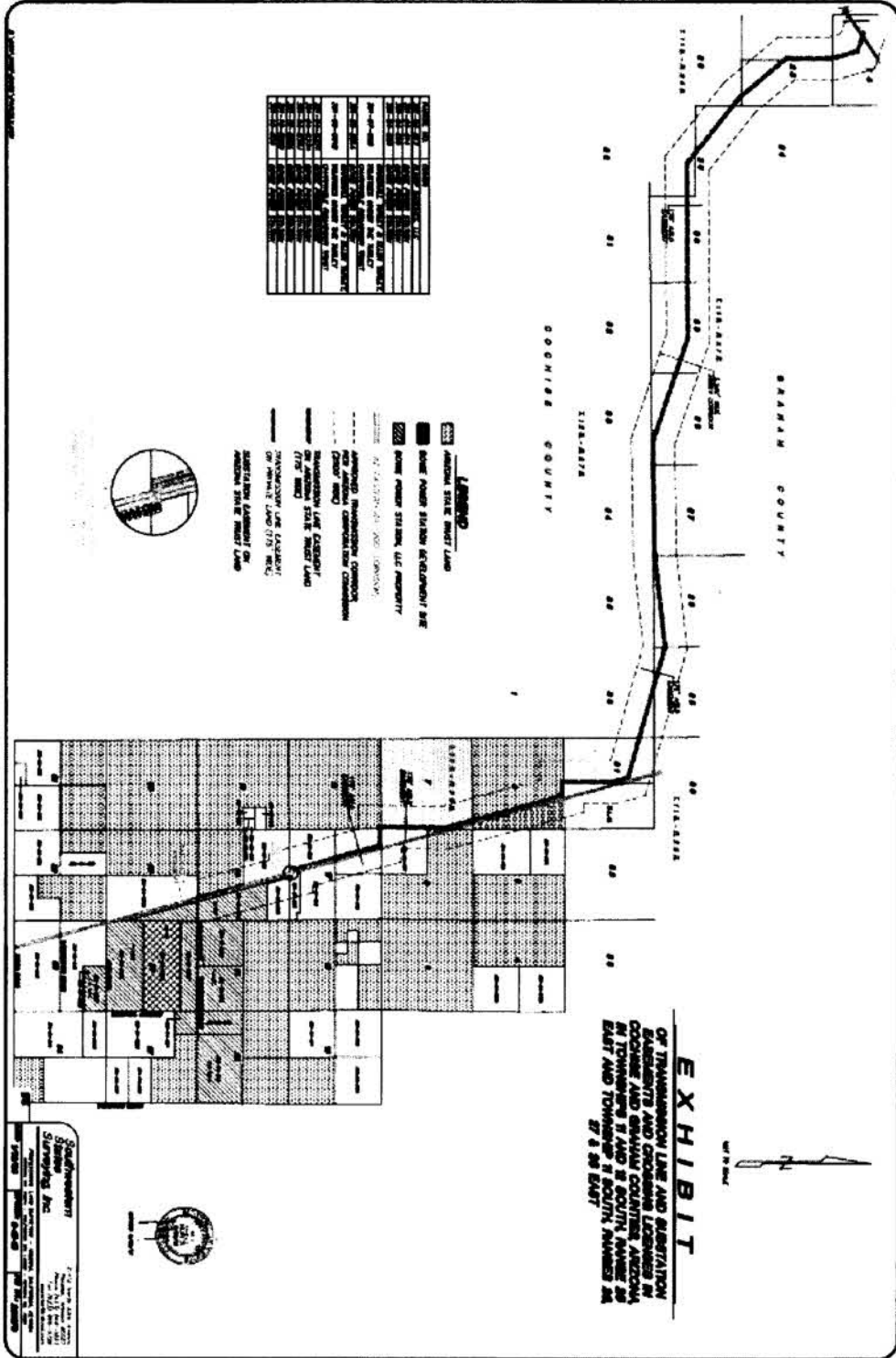
Lawrence V. Robertson, Jr., Esq., of Counsel, Munger Chadwick P.A.

Bert Acken, Esq., Ryley Carlock and Applewhite



Appendix “A”

**345 kV Transmission Line Alignment
Interconnecting Bowie Power Station
to Willow 345 kV Substation**



Appendix “B”

**Bowie Power Station
A.R.S. § 40-360.02 (C) Information Requirements**

Appendix B

Information Requirements Pursuant to A.R.S. § 40-360.02 (C)

40-360.02 (C) (1).

The size and proposed route of any transmission lines or location of each plant proposed to be constructed.

The location of the power plant as described in the Application and Record of Docket Number L-00000BB-01-0118 (the "Bowie Docket") remains unchanged.

The transmission interconnection of the power plant at Bowie with the underlying grid remains unchanged from that described in the Bowie Docket: an approximately 15-mile, double-circuit 345 kV transmission line from the point of interconnection on the existing Greenlee-Winchester-Vail 345 kV line, that is owned and operated by Tucson Electric Power Company, which is known as the Willow 345 kV Substation, and thence to the Bowie Plant Switchyard.

Bowie received approval from the Commission for an amendment to Decision No. 64626 that adjusted the alignment of Bowie's interconnecting double-circuit 345 kV transmission line. This amendment brought the project's transmission line placement into compliance with the Arizona State Land Department's requirements. The nature of this amendment is set forth in Decision No. 70588, dated November 6, 2008. See Appendix "A" of this Ten Year filing, for a map depicting the approved 345 kV transmission line alignment documented in Decision No. 70588.

40-360.02 (C) (2).

The purpose to be served by each proposed transmission line or plant.

The purpose to be served by the proposed transmission line and the power plant remains unchanged from that described in the Bowie Docket.

40-360.02 (C) (3).

The estimated date by which each transmission line or plant will be in operation.

The estimated operation date for the interconnecting transmission line is December 31, 2018.

Current planning anticipates operation of Bowie as follows:

- a. Initial energization of all 345 kV interconnection facilities is estimated to occur by December 31, 2018; and,
- b. Commercial operation of the initial 500 MW (nominal) power block is estimated to occur by July 1, 2019.

40-360.02 (C) (4).

The average and maximum power output measured in megawatts of each plant to be installed.

The average and maximum power output measured in megawatts of the Bowie Power Station that was described in the Bowie Docket remains unchanged.

40-360.02 (C) (5).

The expected capacity factor for each proposed plant.

The expected capacity factor for Bowie Power Station that was described in the Bowie Docket remains unchanged.

40-360.02 (C) (6).

The type of fuel to be used for each proposed plant.

The type of fuel to be used for the Bowie Power Station that was described in the Bowie Docket remains unchanged.

40-360.02 (C) (7).

The plans for any new facilities shall include a power flow and stability analysis report showing the effect on the current Arizona electric transmission system. Transmission owners shall provide the technical reports, analysis or basis for projects that are included for serving customer load growth in their service territories.

Bowie and Tucson Electric Power ("TEP") entered into an Interconnection Facility Study Agreement on October 12, 2012. The Interconnection Facilities Study provides a project description, preliminary design and engineering, cost estimate, and schedule for required facilities to interconnect Bowie to TEP's transmission system at the proposed Willow 345 kV Substation located approximately one mile east of U.S. Highway 191 and eight miles north of Interstate 10.

TEP provided the Facility Study for the Willow 345 kV Substation to Bowie on October 29, 2013. Bowie and TEP executed a Large Generator Interconnection Agreement (“LGIA”) on January 30, 2015. The Bowie Generator Interconnection Study Report and Facility Study were provided to Docket Control of the ACC on February 23, 2015, filed in the Bowie Docket.